

PUDDLE PRO 100MM PUDDLE FLANGE

TECHNICAL DATA SHEET

PuddlePro 100mm Retro Fit Puddle Flange

01/09/2023

DESCRIPTION

PuddlePro 100m Puddle Flange is an Australian design initiative for waterproofing applications. PuddlePro 100mm puddle flange is made from ABS plastic which is a plumbing/waterproofing fitting designed to prevent water penetration and leakage in building structures.

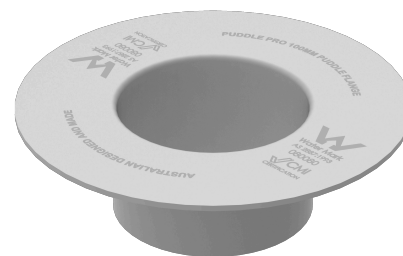
The PuddlePro 100mm retro fit puddle flange is made from Acrylonitrile Butadiene Styrene (ABS) plastic, a thermoplastic material that is known for its durability, impact resistance, and chemical resistance. It makes an ideal waterproofing solution to the connection of the PVC drainage outlet and the waterproofing membrane.

The Puddle Pro 100mm Puddle Flange is designed to prevent water seepage through concrete floors in both residential and commercial buildings. This retro fit flange fits directly onto existing plumbing pipework, making it easy to install for all users. Puddle Pro Puddle Flange is also design for Flood testing with its convenient scored detachable lid.

The Puddle Pro 100mm Retro fit Puddle Flange conforms -

Test Reference Standard: Clause 1.9 of AS 2887:1993 - Freedom from defects

Date of Test: 22/05/2024



Features and Benefits:

1. Easy retrofit installation: This flange is designed to fit directly onto existing pipework, making it easy to install without any additional modifications.
2. Superior waterproofing: The PuddlePro flange provides excellent waterproofing against water seepage through concrete floors. Making a sealed Connection between the Concrete substrate and the Drainage outlet, once installed correctly with a waterproofing membrane system
3. PuddlePro Puddle Flange has a recessed scored detachable inner lid which is designed for flood testing purposes.
4. PuddlePro Puddle Flange has a 12% Positive fall to ensure water falls naturally towards the drainage outlet.
5. Corrosion-resistant: The ABS plastic material provides excellent corrosion resistance, ensuring long-term durability and reliability.
6. Compatible with various waterproofing membranes: This flange is compatible with a range of waterproofing membranes including Polyurethanes, bitumen, PVC, TPO, and EPDM. Please refer to Manufacturers TDS and MSDS Prior to any waterproofing installation.
7. Self-extinguishing and fire-resistant: The PuddlePro flange is self-extinguishing and has a Class B2 fire rating, making it a safe and reliable choice for use in buildings.

Technical Specifications:

Material: ABS Plastic

Outer Diameter: 200mm

Inner Diameter: 96.9mm

Flange Depth: 60mm

Pipe Diameter Compatibility: 100mm

Waterproofing Membrane Compatibility: Polyurethanes, Bitumen, PVC, TPO, EPDM with ACTFLEX SUPER BOND 007 OR ACTFLEX SUPERPRIME 008 primer.

Installation Method: Retrofit

Temperature Resistance: -40°C to 80°C

Corrosion Resistance: Excellent

Fire Resistance: Self-extinguishing, Class B2 (DIN 4102)

Applications:

1. The PuddlePro 100mm ABS Plastic Retro Fit 100mm Puddle Flange is suitable for use in a wide range of applications, including:
2. Residential and commercial buildings with concrete floors
3. Drainage systems
4. Plumbing systems
5. Underground construction.

INSTALLATION

1. First, prepare the area where you will install the flange. The substrate should be clean and free of debris, and the area should be marked where the Puddle Pro Puddle Flange will be installed.
2. Create a recessed area in the substrate where the flange will be installed with the INNOVATIVE TOOLS 200MM CONCRETE RECESS DISC. The recess should be large enough to allow the Puddle Pro Puddle Flange to fit snugly and be flush with the concrete level.
3. Apply ACTFLEX SUPER BOND 007 or ACTFLEX SUPER PRIME 008 primer to the outside of the Puddle Pro 100mm Puddle Flange, including both the topside and underside of the flange's horizontal face. Allow the primer to dry according to the manufacturer's instructions. Next, apply a bead of sealant, such as ACTFLEX 75FC or ACTFLEX MS PRO, to the underside of the horizontal face.
4. Apply PVC primer glue to the neck of the flange, and insert the neck into the 100mm pipe embedded in the concrete.
5. Insert the Puddle Pro Puddle Flange in the pipe drainage outlet, making sure it is centred and pushed all the way in. Hold the connection in place for a few seconds to allow the glue to set. Ensure that the flange is seated at least 3mm-4mm below the surface level.
6. Place the Puddle Pro Puddle Flange into the recessed area, making sure it is flush with the concrete level. Apply pressure to the Puddle Pro Puddle Flange to ensure a secure fit.
7. Allow the glue to dry completely before testing the connection.
8. **Must be installed in accordance with the Plumbing Code of Australia and AS/NZS 3500.1**

CLEAN UP

- Wash all equipment in soapy water immediately after use.
- DO NOT discharge into sewer or waterways.
- DO NOT allow wash water from cleaning or process equipment to enter drains.

STORAGE

- Products should be stored above ground in cool dry conditions @ 10-26°C & 50% R.H.
- Keep in a well-ventilated place, away from sunlight.

SAFETY

When handling DO NOT eat, drink or smoke. Always use in a well-ventilated area and wear Personal Protection Equipment (PPE). Wash hands immediately after use and before breaks. DO NOT allow material to contact humans, exposed food or food utensils. In case of eye contact, rinse with plenty of water: If inhaled, remove to fresh air: if swallowed (DO NOT INDUCE VOMITING) and immediately contact Doctor or Poisons Information centre on 131 126 (AUS) and 0800 764 766 (NZ). IN TRANSPORT EMERGENCY DIAL 000 – POLICE-FIRE BRIGADE. KEEP OUT OF REACH OF CHILDREN. Local regulations as well as health and safety advice on packaging labels must be observed.

For more information, please download a copy of the SDS from www.caulkmate.com.au or www.thewaterproofingshop.com.au

This Technical Data Sheet and the Material Safety Data Sheet (SDS) may be revised at any time to comply with relevant changes to the Australian Standards or to include changes to current technology. Always read the current SDS and TDS carefully prior to use as application and performance data

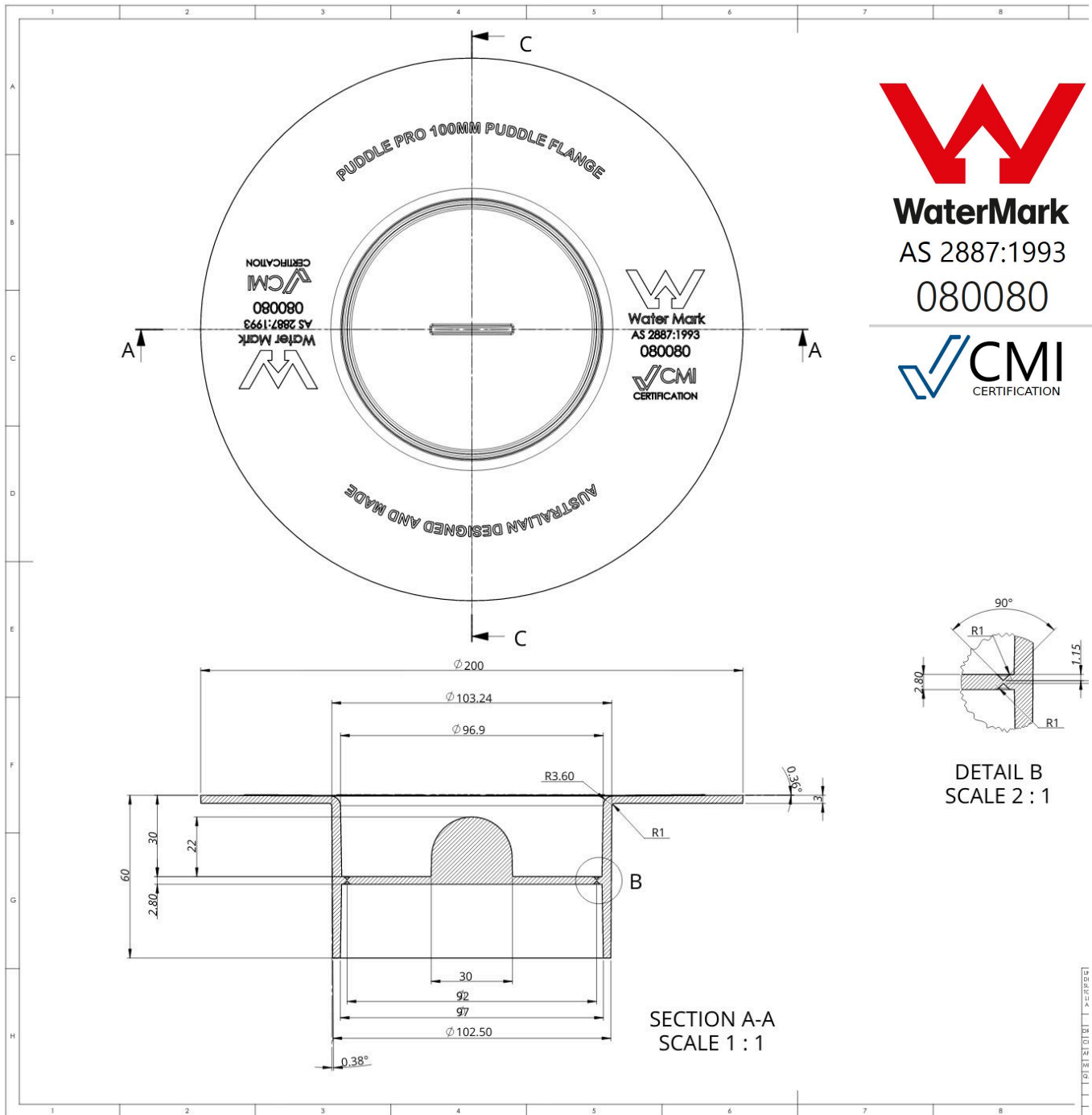
may change from time to time. It is always best to request a copy of the latest technical data from Caulkmate Pty Ltd calling 02 8021 3517 or emailing info@caulkmate.com.au.

Data provided is typical but does not constitute a full specification. This should be sighted from the company for specific projects.

CONDITIONS OF USE, PRODUCT DISCLAIMER AND STATEMENT OF RESPONSIBILITY

The information supplied is given in good faith and to the best of our knowledge is true and accurate at the time of printing. As the information herein is of a general nature, no assumption can be made as to a product's suitability for a particular use or application and no warranty as to accuracy, reliability or completeness either expressed or implied is given other than those required by Commonwealth or State Legislation. We reserve the right to update information without prior notice to you to reflect our ongoing research and development program. The customer or the contractor is responsible for checking the suitability of products for their intended use. It is the customers' responsibility to ensure that our products are used and handled correctly and in accordance with any applicable Australian Standards. Our instructions and recommendations are only for intended users only. Any advice, recommendation, information, assistance or service provided by Caulkmate Pty Ltd in relation to its products or their use is given in good faith, however is provided without responsibility or liability. To the full extent permitted by law, Caulkmate Products liability is limited to its discretion, to replace or to refund the purchase price of the quantity of the products supplied. Caulkmate does not exclude rights and remedies that cannot be excluded by legislation, for example under the Consumer Guarantees Act 1993. Under no circumstances will the company be liable for loss, consequential or otherwise, arising from the use of the product.

PUDDLEPRO 100MM PUDDLE FLANGE



The information supplied is given in good faith and to the best of our knowledge is true and accurate at the time of printing. As the information herein is of a general nature, no assumption can be made as to a product's suitability for a particular use of application and no warranty as to accuracy, reliability or completeness either expressed or implied is given other than those required by Commonwealth or State Legislation. We reserve the right to update information without prior notice to you to reflect our ongoing research and development program. The customer or the contractor is responsible for checking the suitability of products for their intended use. It is the customers' responsibility to ensure that our products are used and handled correctly and in accordance with any applicable Australian Standards. Our instructions and recommendations are only for intended users only. Any advice, recommendation, information, assistance or service provided by Caulkmate Pty Ltd in relation to its products or their use is given in good faith, however is provided without responsibility or liability. To the full extent permitted by law, Caulkmate Products liability is limited to its discretion, to replace or to refund the purchase price of the quantity of the products supplied. Caulkmate does not exclude rights and remedies that cannot be excluded by legislation, for example under the Consumer Guarantees Act 1993. Under no circumstances will the company be liable for loss, consequential or otherwise, arising from the use of the product.